

**CHEMICAL PRODUCTS**  
**DPA REFINISH 2021**



**[WWW.DPADILUYENTES.COM](http://WWW.DPADILUYENTES.COM)**

# SUMMARY OF THE PRESENTATION

REAGENT GOLD ECO FAST HS WB  
REAGENTS 002,003,004 WB  
MERCURY CLEARCOAT 3012HS  
MERCURY CLEARCOAT 3012 VHS  
SPECIAL HEADLIGHTS CLEARCOAT 2020  
SPECIAL MATT CLEARCOAT 2040  
QUICK REPAIR CLEARCOAT 2060  
DEGREASER 044  
ACRYLIC THINNER 0700  
ACRYLIC THINNER 0750  
HIGH DENSITY FILLER 2080  
ACCELERATOR PCK 800  
POLISH 4013 DIAMOND 2 IN 1



# REFINISH DPA CONCEPT

## WHAT IS DPA REFINISH?

D.P.A. Refinish and its high range of products wants to help professionals to overcome the high cost of raw materials that prevent companies from competing with solvency and flexibility with the highest quality finishes.





# REAGENT

## GOLD ECO FAST HS WB

It is a chemical reagent that improves the physicochemical properties of waterborne paint. Extra fast drying, coverage, better extensibility of the paint, better particle positioning, better varnish finish. Equivalent to all brands of automotive waterborne paints

PACKAGING

5L / 2L



Supported by:



UNIÓN EUROPEA





# REAGENT

002 / 003 / 004

It is a chemical reagent that improves the physico-chemical properties of waterborne paints. Extra fast drying, coverage, better extensibility of the paint, better particle positioning, better varnish finish. Each reagent number depends on the paint group used.

PACKAGING

5L / 2L



Supported by:



UNIÓN EUROPEA

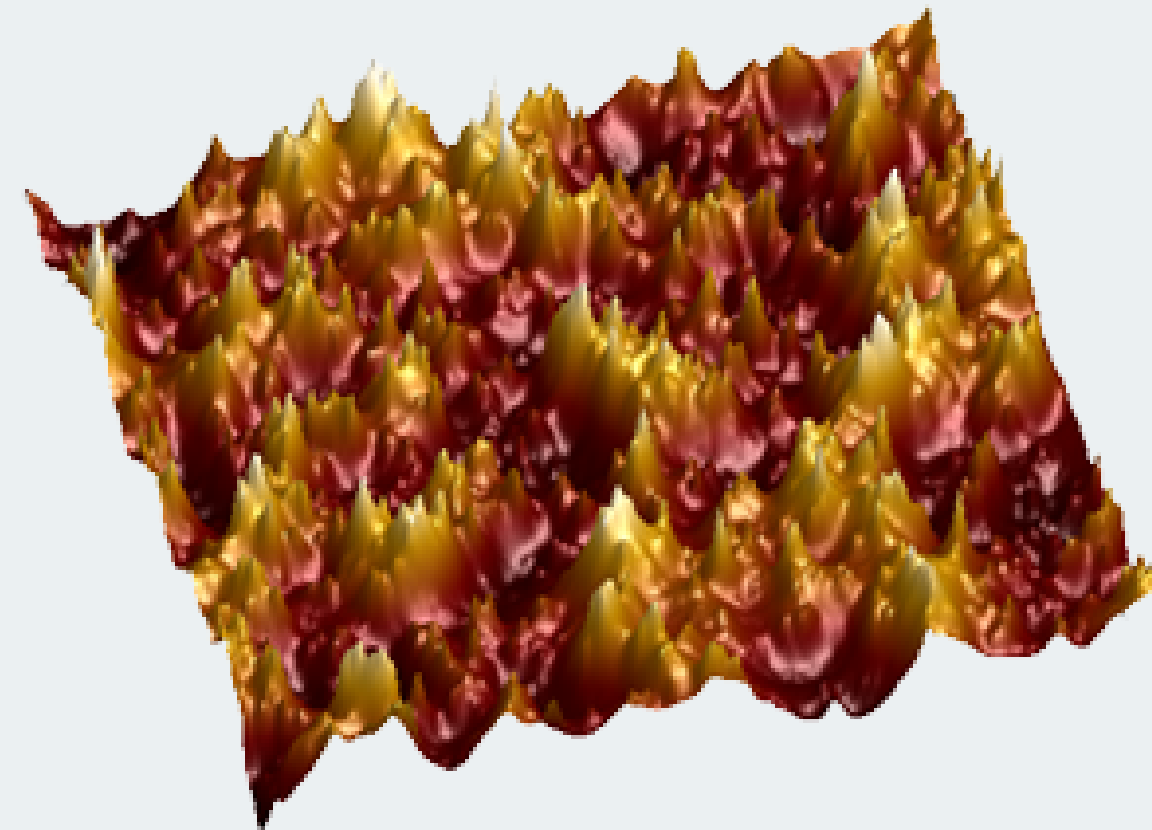
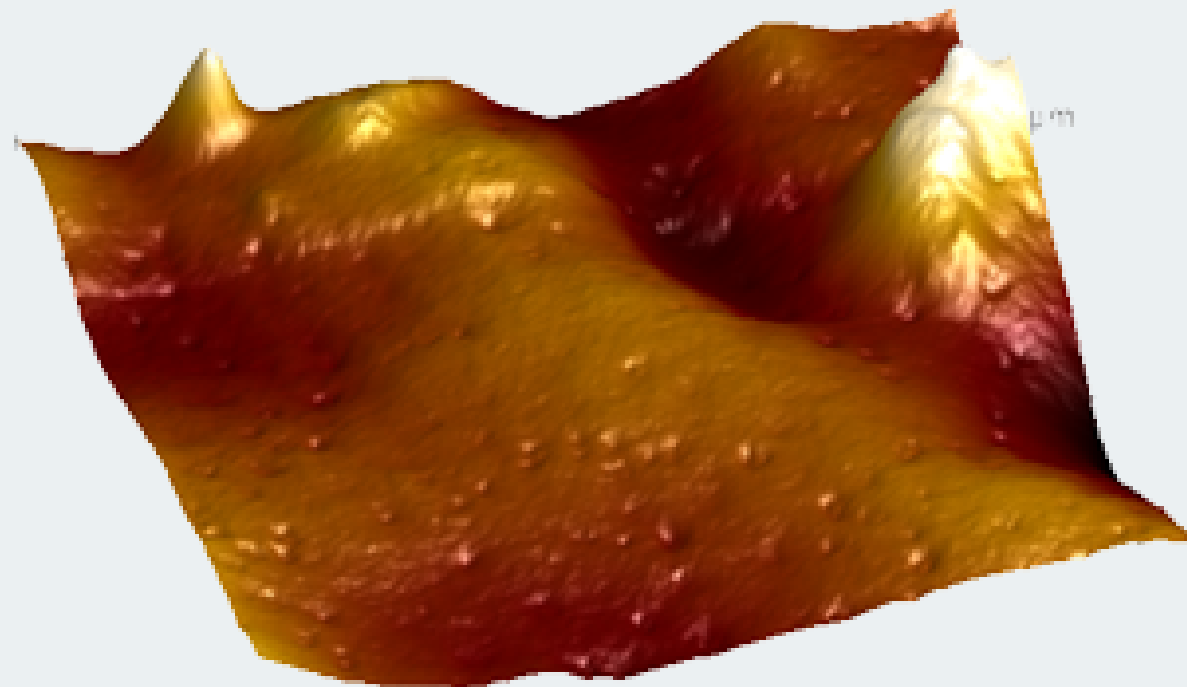


# MAIN CHARACTERISTIC

OF OUR REAGENT

AFM test  
(Atomic Force Microscopy)

SAME MICRONAGE. LESS ROUGHNESS.



# CLEAR COAT

## 3012 MERCURY HS 2:1

It is a type of clearcoat formulated with the highest quality acrylic resins available on the market and is very easy to apply, with a high performance and very high gloss. Mercury HS 3012 clearcoat is specially developed to be applied mainly in two-coat systems, with excellent drying, both in the air and in the booth.

### PACKAGING

5L Y 2.5L

1L Y 0.5L

MIXING RATIO 2:1

UP TO 10% SOLVENT DPA 0750

UP TO 3% ACCELERATOR PCK

800





# CLEAR COAT

## 3012 MERCURY VHS 2:1

The acrylic car clearcoat 3012 VHS 2:1 is a new and revolutionary high solids clearcoat exclusive on the market and manufactured by DPA Thinners with the idea to offer its customers a high quality star product at the best price.

### PACKAGING

5L Y 2.5L

1L Y 0.5L

### MIXING RATIO 2:1

UP TO 15% SOLVENT DPA 0750

UP TO 3% ACCELERATOR PCK

800

**60%**  
SOLIDOS



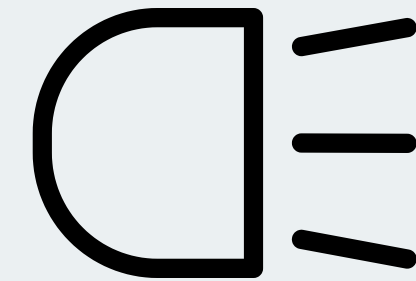
# SPECIAL CLEAR COAT

## HEADLIGHTS 2020

DPA 2020 Special Headlight clearcoat is developed for the repair of polycarbonate headlights, keeping the technical specifications of brightness, opacity and above all the quality of a product for this system.

**PACKAGING**  
0.5L Y 0.250L

MIXING 2:1  
WITHOUT SOLVENT  
NO ADHESIVE  
READY TO USE  
<35DEGREES USE 3:1



# CLEAR COAT

## SPECIAL MATT 2040

The 2040 Matt clearcoat is a product manufactured for the automotive sector, as a completely matt finish, on sports cars and also on series production vehicles. The main characteristic is its easy application with a uniform finish without excessive care for the control of the applied layer.

**PACKAGING**  
1L Y 0.5L

MIXING RATIO 2:1  
UP TO 25% OF THE  
SOLVENT DPA 0750 IS  
ALLOWED.





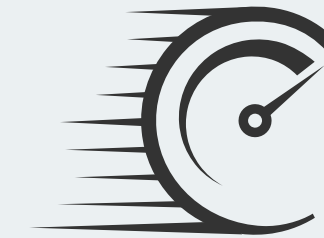
# CLEAR COAT

## QUICK REPAIR 2060

The 1:1 quick repair kit is ideal for all those quick car repairs where an extremely short repair time is required and optimum cost-effectiveness in terms of both cabin heat and labour costs is desired.

PACKAGING  
1L Y 1L

MIXING RATIO 1:1  
READY TO USE DOES NOT  
ACCEPT SOLVENT



# DEGREASER

## 044 WATER-BASED

DENS CAR RAPID W/B is a fast concentrated water-based degreaser concentrate that allows the professional to degrease quickly before refinishing with an excellent finish. As it does not contain chlorinated solvents, it does not damage the repaired areas (fillers and primers) and other applications used in the repair. Due to its high evaporation power, it does not leave residues that can become a problem later on (removed and damp areas etc...) in the repainting.

PACKAGING  
500ML PULV.  
5L.



# THINNER

## 0700 SLOW

DPA 0700 is an ideal thinner for 2K lacquers, from 5% to 15%, slowing down polymerisation, especially for warm temperatures.

PACKAGING

5L / 1L





# THINNER

## 0750 EXTRA SLOW

DPA 0750 is an ideal thinner for 2K lacquers, from 5% to 15%, slowing down polymerisation, especially for warm temperatures (SUMMER).

PACKAGING

5L / 1L



# PRIMER

## HIGH DENSITY 2080

The fast drying 4:1 HS acrylic high build primer in a range of three colours (black, grey and white) is particularly suitable for jobs where a high filling power filler is required and can be converted wet-on-wet with 25% DPA 0750 thinner.

**PACKAGING**  
4L Y 1L

MIXING RATIO 4:1  
UP TO 25% OF THE  
SOLVENT DPA 0750 IS  
ALLOWED.



# PUTTY

## 2090 UNIVERSAL

The Universal Putty DPA 2090 perfect for bodywork is the best alternative when repairing sheet metal in the automotive sector with the ideal characteristics for large surfaces in the filling process.

**PACKAGING**

**1.8 Kg**



- Recommended for large repairs
- Higher filling power
- Heavier
- Non-porous
- Fast drying
- Does not suck on patches
- Favours good sanding





# PUTTY

## 2090 SOFT

Soft Putty - Soft DPA 2090 is ideal for work on car bodywork in the final touch-up phase. The best material for small repairs or the final finish in the body repair process.

**PACKAGING**

**1.8 Kg**



- Recommended for large repairs
- Higher filling power
- Heavier
- Non-porous
- Fast drying
- Does not suck on patches
- Favours good sanding

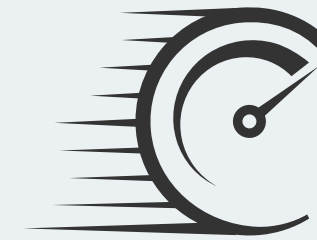


# ACCELERATOR

## ACCELERATOR PCK 800

This type of accelerator has the property of being miscible and compatible with 2K polyurethane and acrylic varnishes. 3 to 5% of the product should be added to the mixture to accelerate the drying of the clear coat or primer, taking into account that it shortens the pot life of the mixture.

PACKAGING  
500ML



# POLISH

## 4013 DIAMOND

This product is a 2 in 1 polish, i.e. in 1 step you have double functionality. With the best minerals and a fine cut for the best detailing polish.

PACKAGING  
500ML



## **CONTACT US**

### **ADDRESS**

Calle Travesía de l'alquería N°8 - 46469 VALENCIA

### **PHONE NUMBER**

96 312 28 31

### **EMAIL ADDRESS**

[info@dpadiluyentes.com](mailto:info@dpadiluyentes.com)

